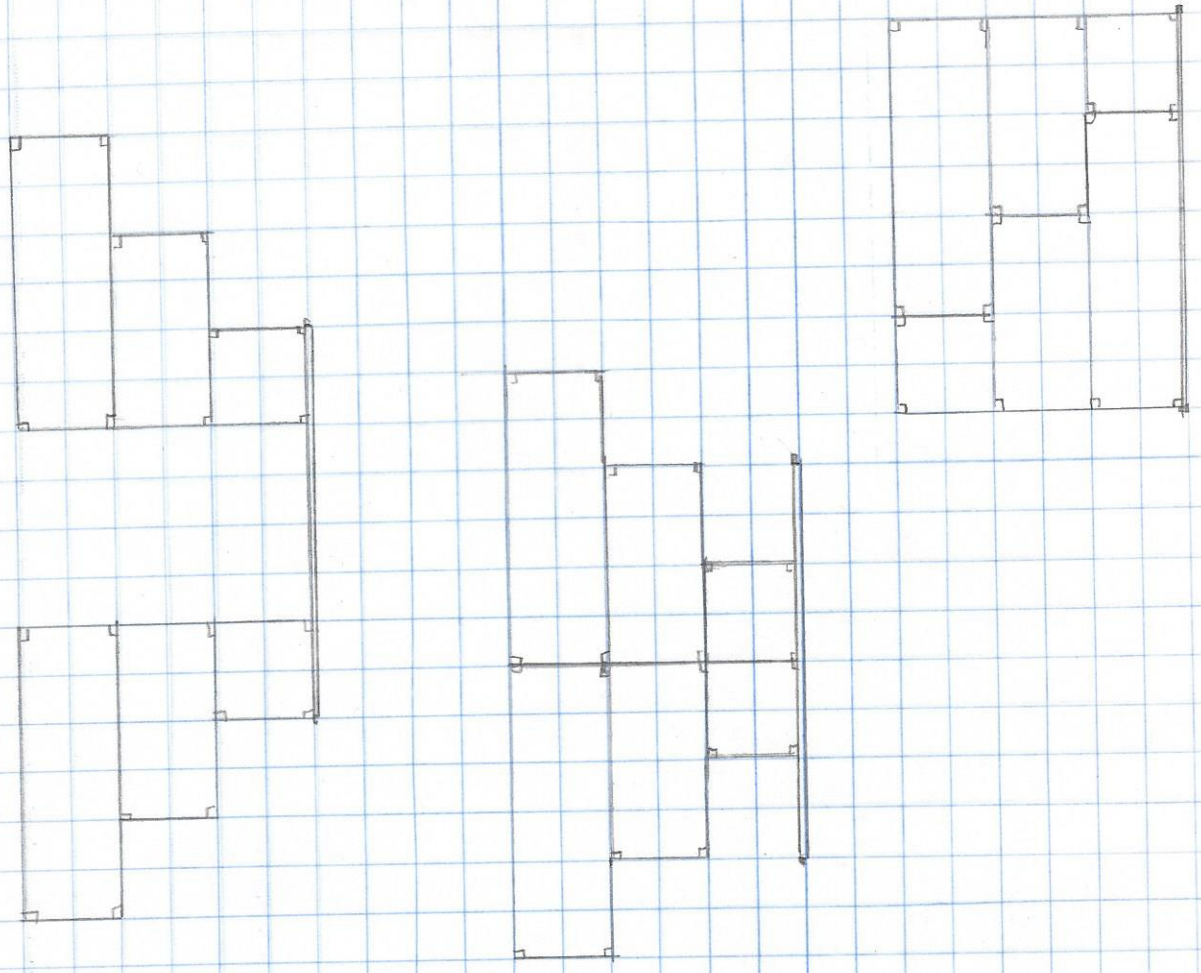


Bill of Materials

Qty	Description
4	$\frac{3}{8}$ " x 36" □ Square Bar
8	$\frac{3}{8}$ " x 35 $\frac{1}{4}$ " □
4	$\frac{3}{8}$ " x 23 $\frac{1}{4}$ " □
4	$\frac{3}{8}$ " x 11 $\frac{1}{4}$ " □
2	$\frac{3}{8}$ " x 12" □
2	$\frac{3}{8}$ " x 48" □
2	$\frac{3}{8}$ " x 13" □
1	$\frac{3}{16}$ " x 13" x 48" R
40	$\frac{3}{8}$ " x 12 $\frac{1}{8}$ " □
8	$\frac{3}{8}$ " x 3" □



Project will take 6 sticks of $\frac{3}{8}$ " x 40' square bar

1 = 1 side + (1) 13" + (1) 48"

2 = 2 side + (0) 13" + (0) 48"

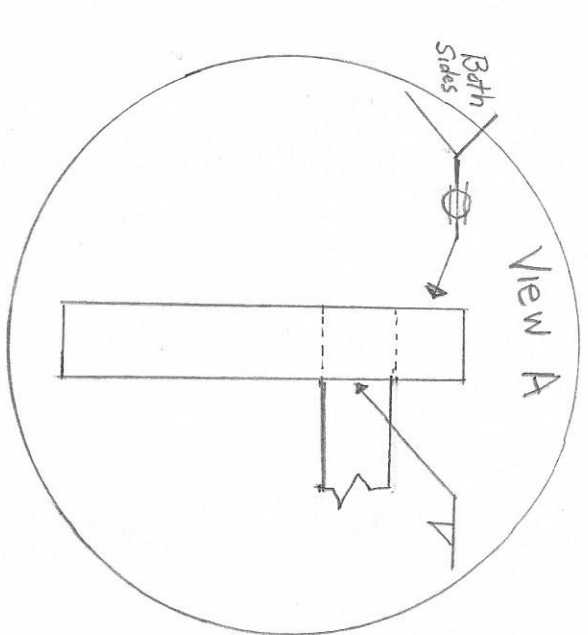
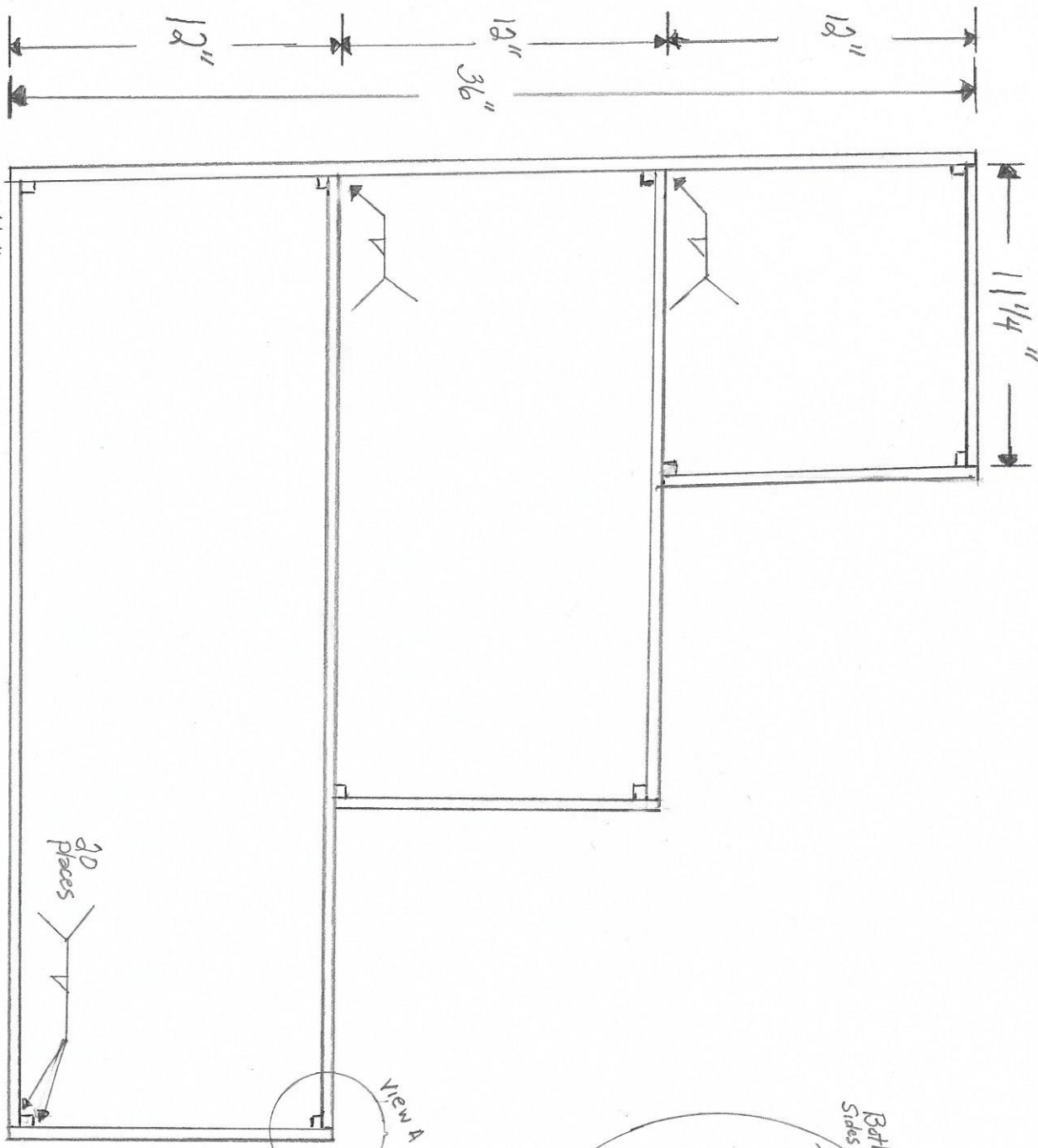
3 = 3 side + (4) 12 $\frac{1}{8}$ "

4 = 4 side + (4) 12 $\frac{1}{8}$ "

5 = (18) 12 $\frac{1}{8}$ "

6 = (14) 12 $\frac{1}{8}$ " + (8) 3"

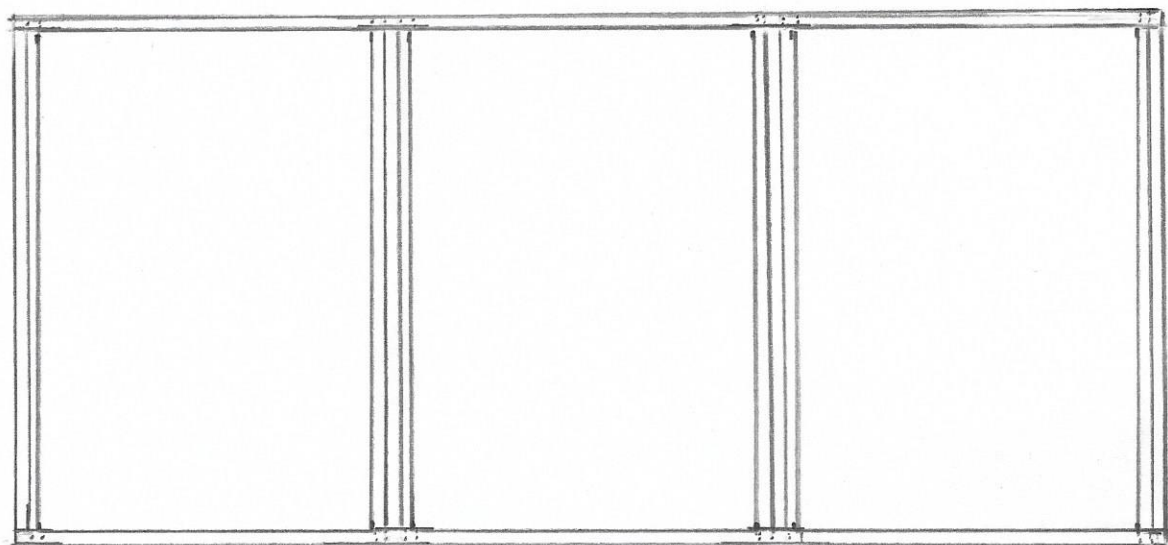
Multi-Function Table/Shelf Frame
 2017 Skills USA Fab Comp.

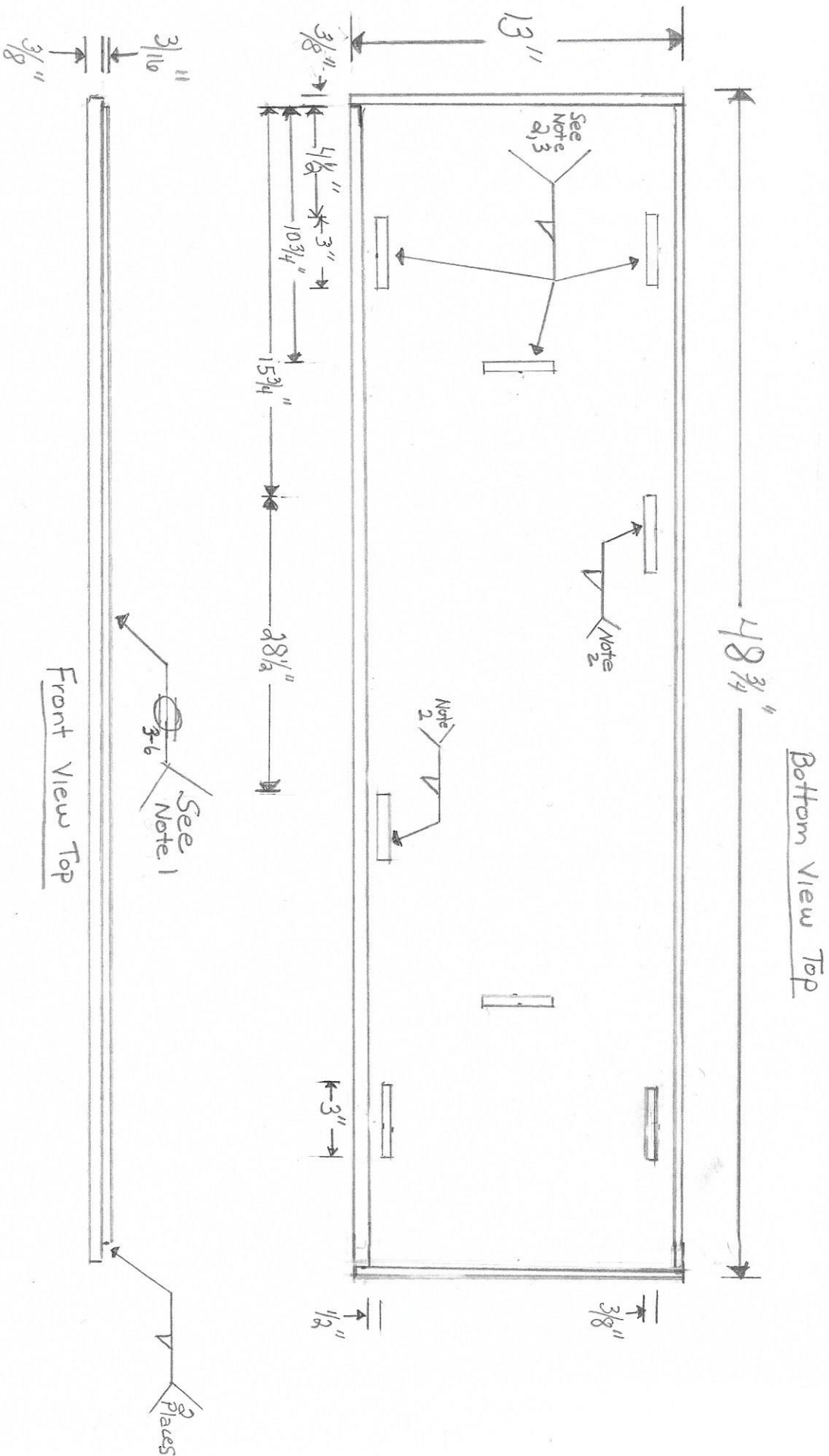


FRONT View

Right Side View

12 1/8"





Notes:

1. Both long sides of top
2. Wrap fillet around corner but no weld on other side
3. Same welds other end
4. All welds GMAW

Top